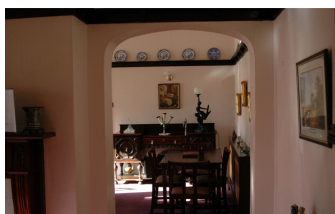


Belle Vue - Sunderland is situated in a sought after residential area of Sunderland. It provides the highest standards of care and our staff are all committed to maintain a homely and safe environment for our residents, the emphasis is on dignity, privacy and choice. The home has 27 single rooms, some with en-suite facilities. The home is situated close to the town centre and all local community facilities and close to all public transport routes. We encourage our residents to be independent while always being aware of their physical, emotional and spiritual needs. We also have a busy activities programme.



## Belle Vue - Sunderland



Belle Vue - Sunderland has 27 single rooms some with en-suite facilities. Assisted baths are available for residents and there is a nurse call system in every room.

The home has two generous lounges to enable the residents to join in social activities or relax.

A passenger lift aids transport between the floors and the home has full disabled access.

A qualified chef provides a range of daily and seasonal choices; a sample menu is available from the home.

An activities programme to ensure residents time is spent in pursuing their own interests.

I am glad I choose to live here. I am so proud of this place I always tell people about it!